

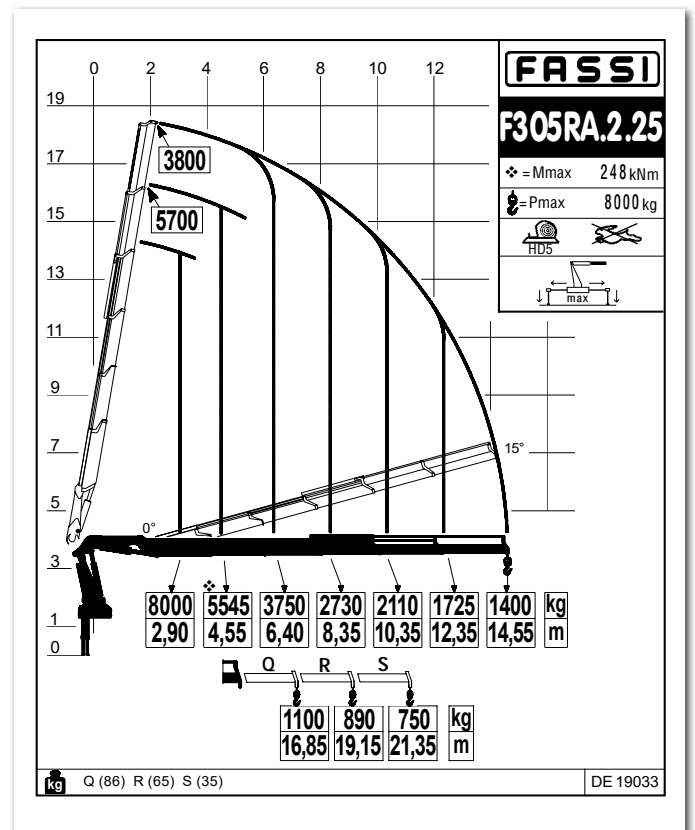
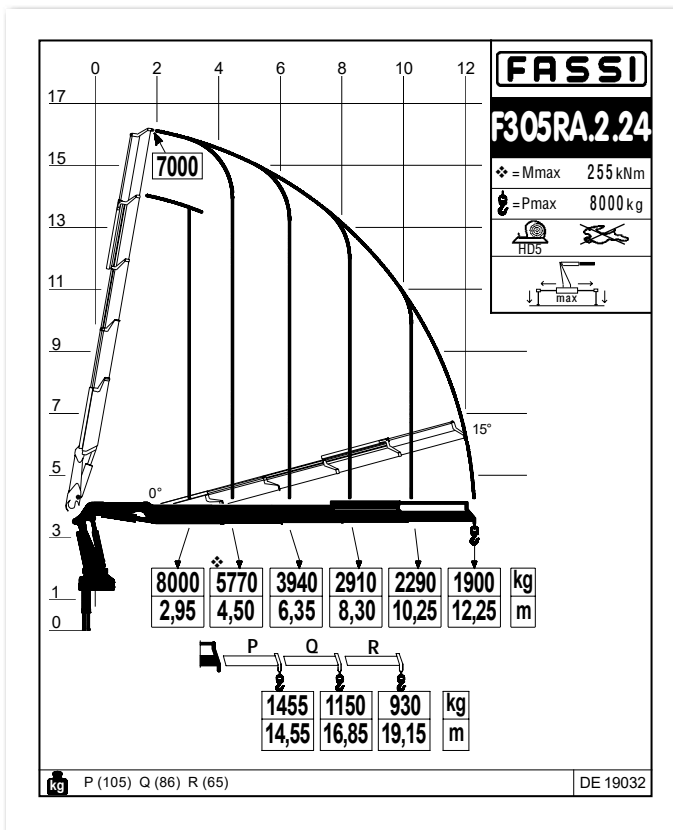
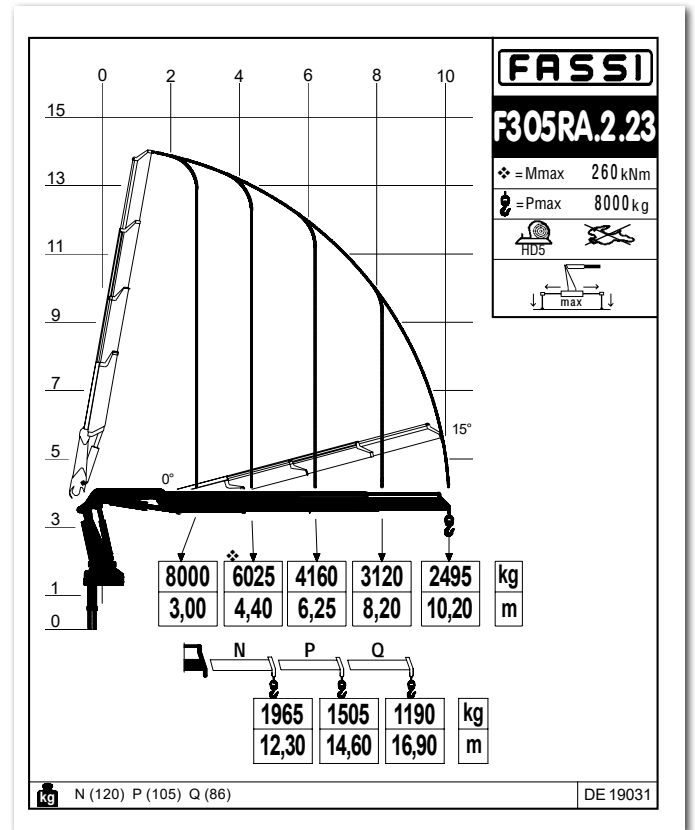
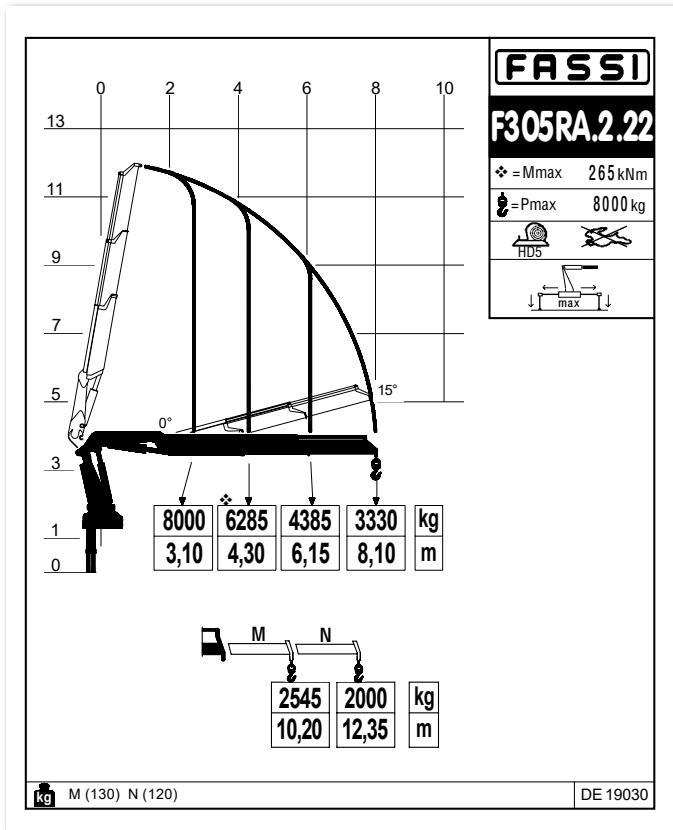
F305RA xe-dynamic
Temporary



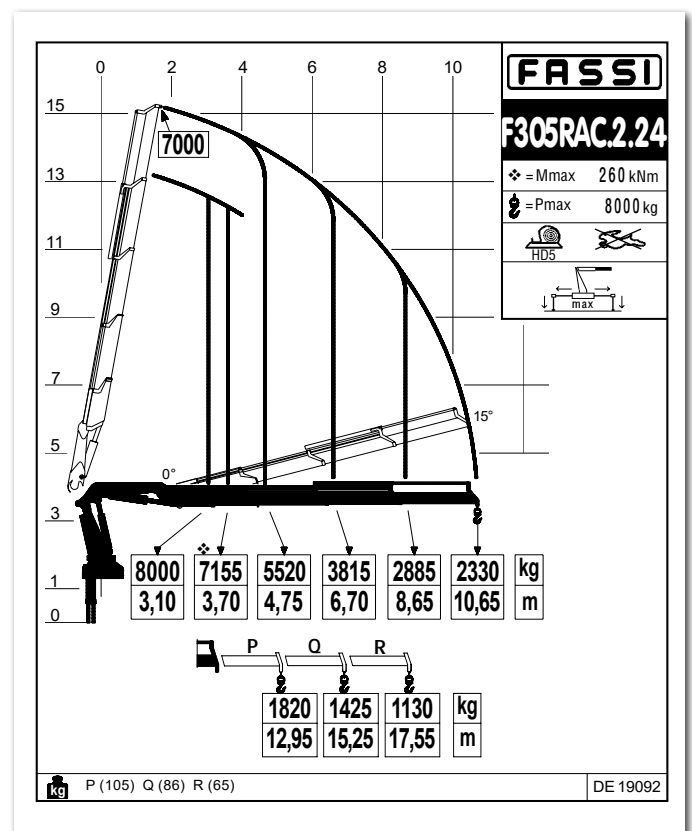
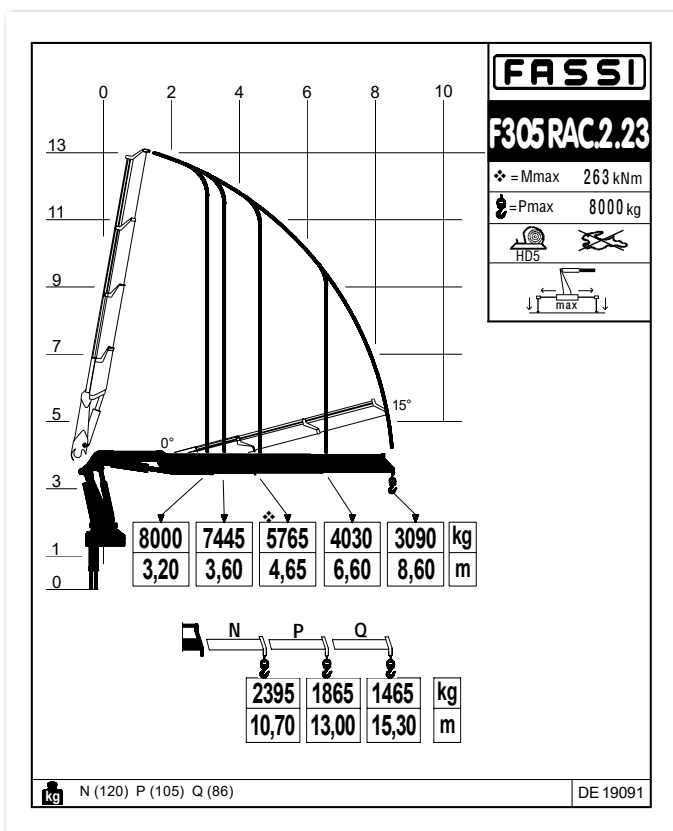
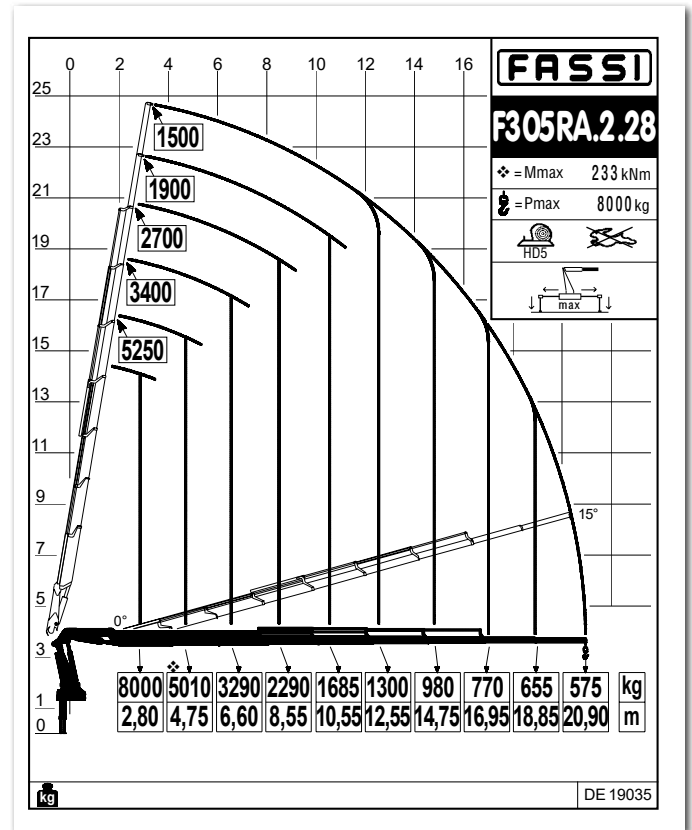
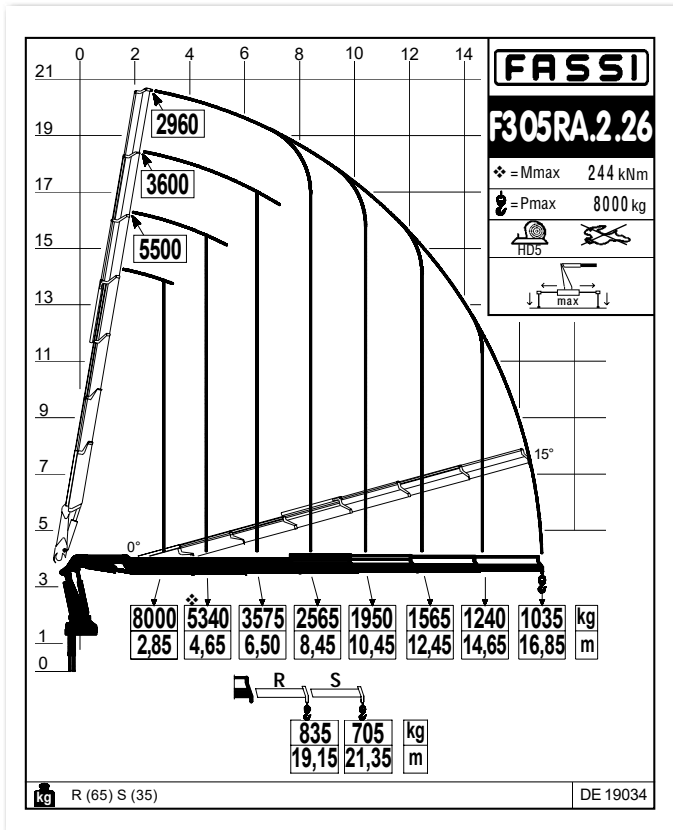
F305RA xe-dynamic



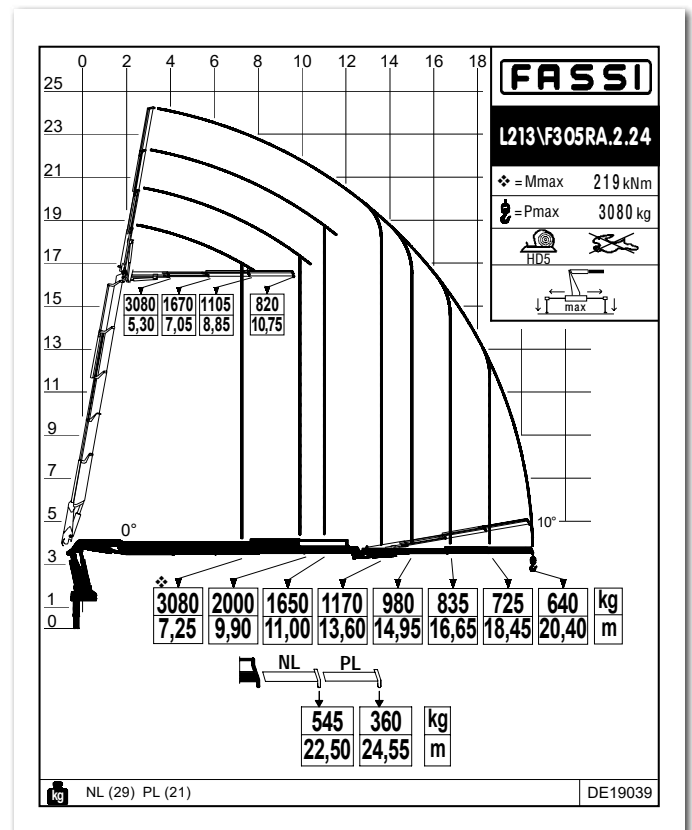
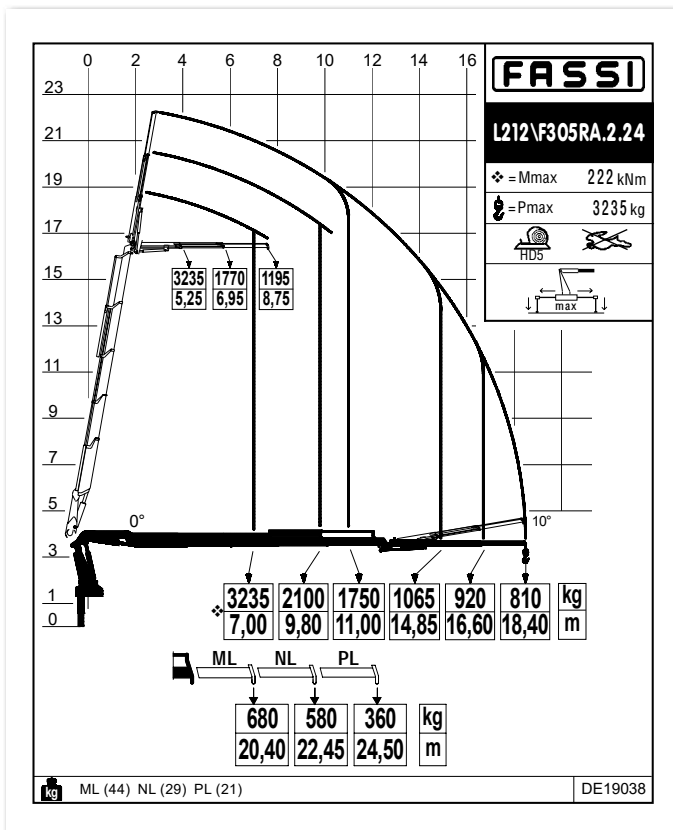
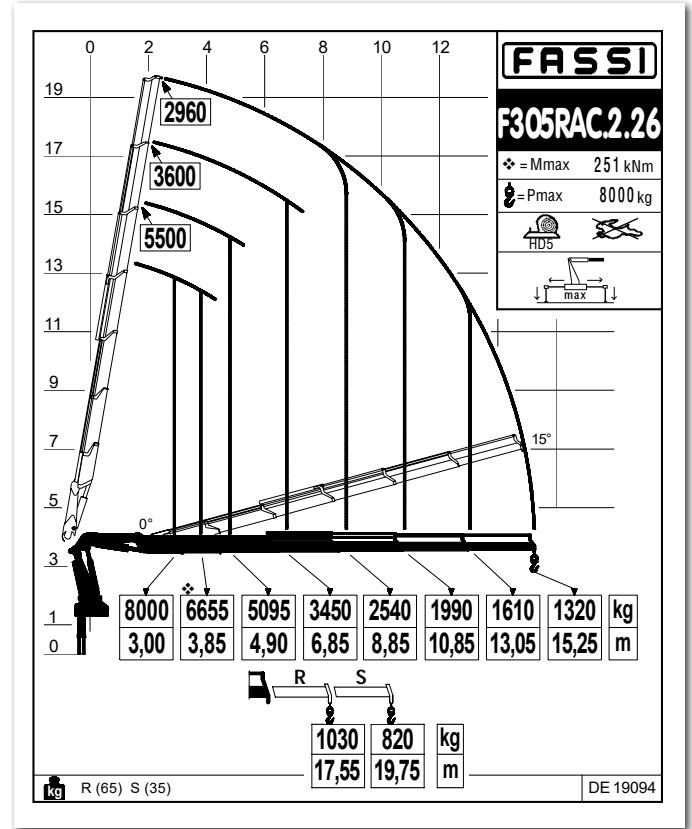
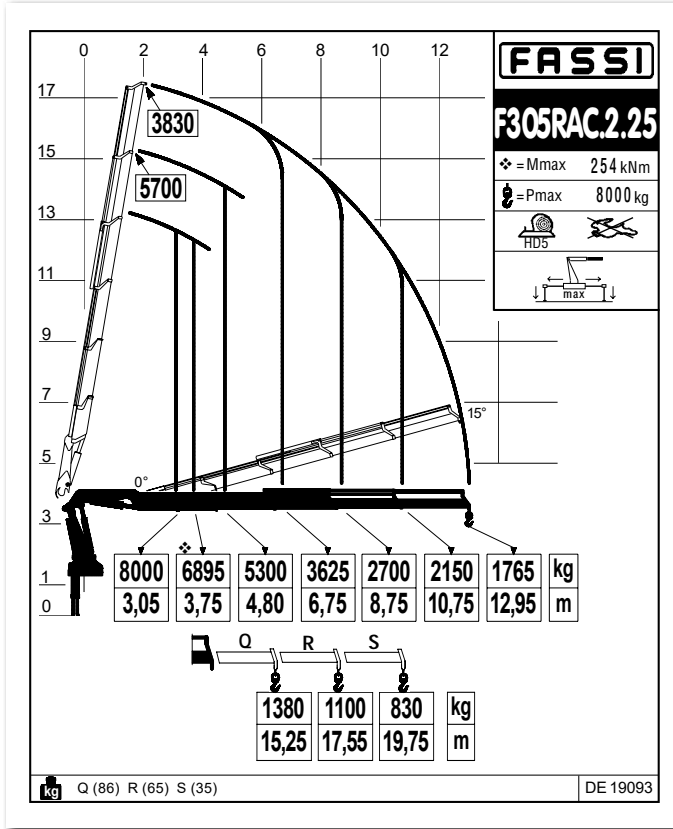
LEADER **IN** INNOVATION



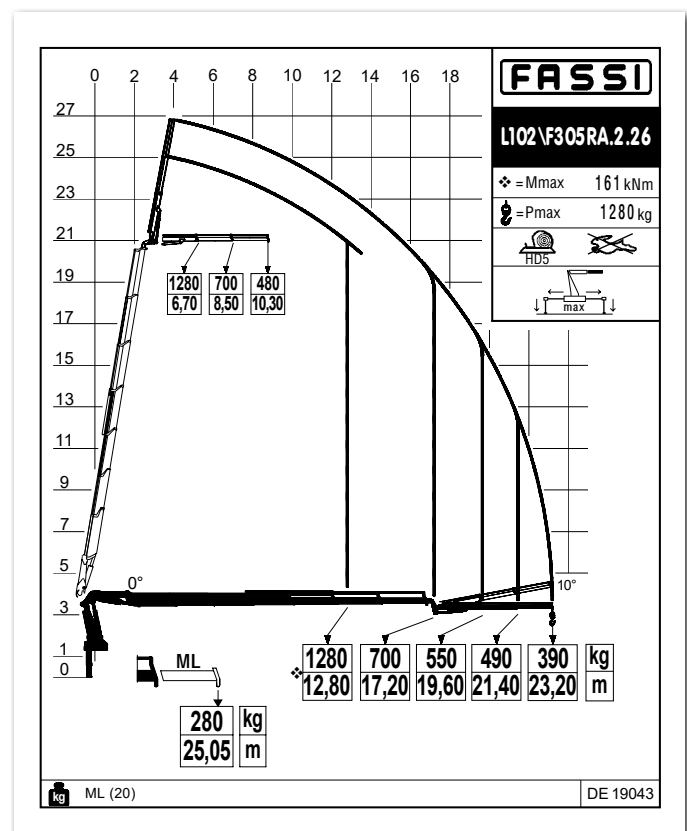
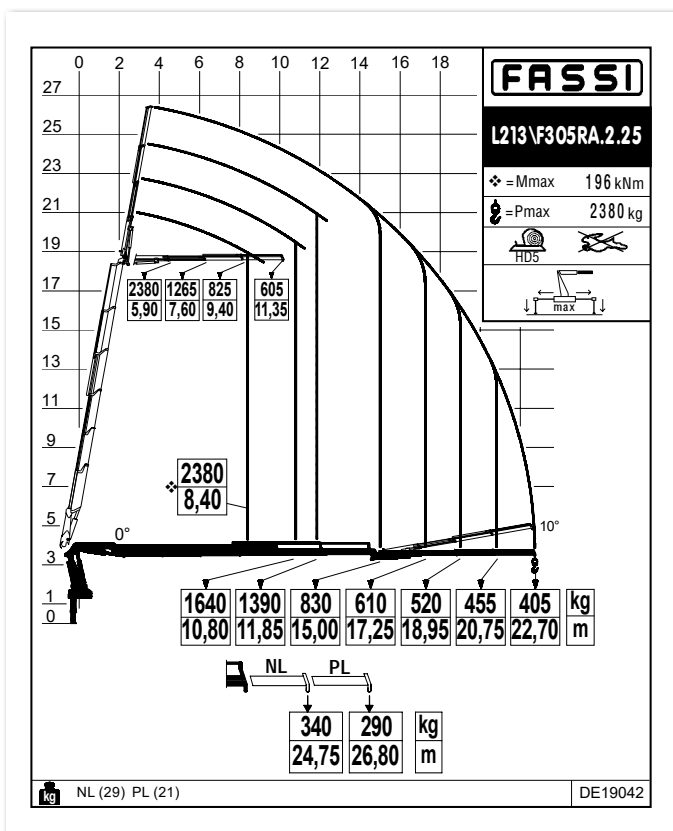
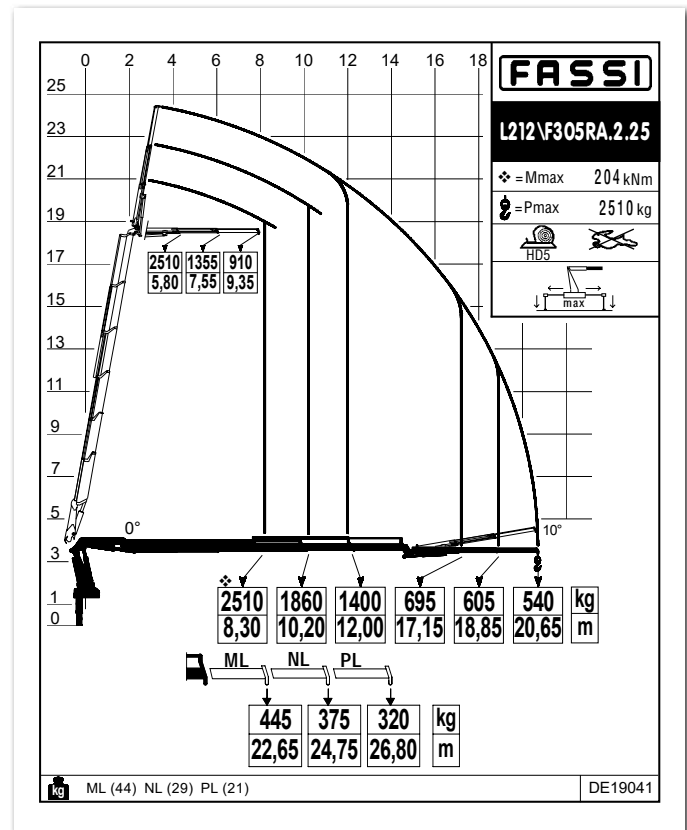
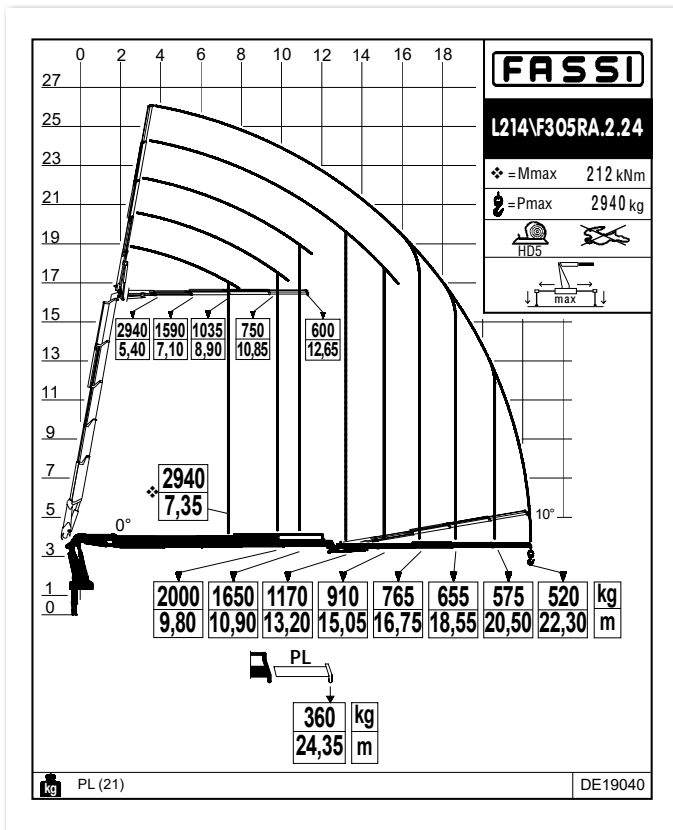
Crane belonging to the HC1 HD5 S2 class (if installed on truck) according to EN 12999:2011 - Gru appartenente alla classe HC1 HD5 S2 (se allestita su camion) secondo la norma EN12999:2011 - Grue appartenant à la classe HC1 HD5 S2 (s'il est installé sur le camion) selon la norme EN 12999: 2011 - Crane aus der HC1 HD5 S2 Klasse (wenn sie auf Lastwagen montiert) nach EN 12999:2011 - Grúa que pertenezca a la clase HC1 HD5 S2 (si está instalado en el camión), de acuerdo con la norma EN 12999:2011 - Kraan die behoren tot de HC1 HD5 S2 klasse (indien geïnstalleerd op de vrachtwagen) volgens EN 12999:2011



Crane belonging to the HC1 HD5 S2 class (if installed on truck) according to EN 12999:2011 - Gru appartenente alla classe HC1 HD5 S2 (se allestita su camion) secondo la norma EN12999:2011 - Grue appartenant à la classe HC1 HD5 S2 (s'il est installé sur le camion) selon la norme EN 12999: 2011 - Crane aus der HC1 HD5 S2 Klasse (wenn sie auf Lastwagen montiert) nach EN 12999:2011 - Grúa que pertenezca a la clase HC1 HD5 S2 (si está instalado en el camión), de acuerdo con la norma EN 12999:2011 - Kraan die behoren tot de HC1 HD5 S2 klasse (indien geïnstalleerd op de vrachtwagen) volgens EN 12999:2011



Crane belonging to the HC1 HD5 S2 class (if installed on truck) according to EN 12999:2011 - Gru appartenente alla classe HC1 HD5 S2 (se allestita su camion) secondo la norma EN12999:2011 - Grue appartenant à la classe HC1 HD5 S2 (s'il est installé sur le camion) selon la norme EN 12999: 2011 - Crane aus der HC1 HD5 S2 Klasse (wenn sie auf Lastwagen montiert) nach EN 12999:2011 - Grúa que pertenezca a la clase HC1 HD5 S2 (si está instalado en el camión), de acuerdo con la norma EN 12999:2011 - Kraan die behoren tot de HC1 HD5 S2 klasse (indien geïnstalleerd op de vrachtwagen) volgens EN 12999:2011



Crane belonging to the HC1 HD5 S2 class (if installed on truck) according to EN 12999:2011 - Gru appartenente alla classe HC1 HD5 S2 (se allestita su camion) secondo la norma EN12999:2011 - Grue appartenant à la classe HC1 HD5 S2 (s'il est installé sur le camion) selon la norme EN 12999: 2011 - Crane aus der HC1 HD5 S2 Klasse (wenn sie auf Lastwagen montiert) nach EN 12999:2011 - Grúa que pertenezca a la clase HC1 HD5 S2 (si está instalado en el camión), de acuerdo con la norma EN 12999:2011 - Kraan die behoren tot de HC1 HD5 S2 klasse (indien geïnstalleerd op de vrachtwagen) volgens EN 12999:2011

F305RA xe-dynamic

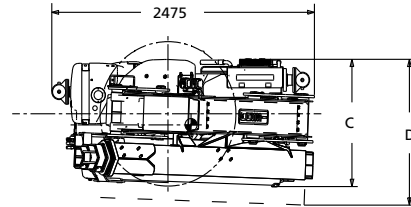
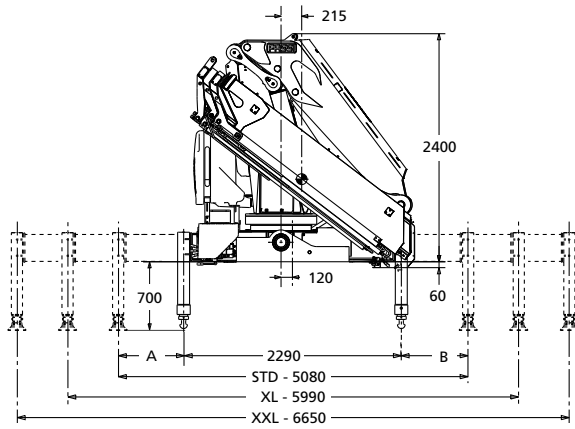
Technical data

kg/m													
	kNm	tm	m	m	°	kNm	MPa	l/min	l	kg	mm	mm	mm
F305RA.2.22*	265	27,02	8,15	3,80	360 continuous	25,0	34,0	45-65	120	2925	2475	1085	2400
F305RA.2.23*	260	26,51	10,20	5,80	360 continuous	25,0	34,0	45-65	120	3140	2475	1130	2400
F305RA.2.24*	255	26,00	12,30	7,75	360 continuous	25,0	34,0	45-65	120	3350	2475	1135	2400
F305RA.2.25*	248	25,28	14,55	10,00	360 continuous	25,0	34,0	45-65	120	3525	2475	1135	2400
F305RA.2.26*	244	24,88	16,85	12,20	360 continuous	25,0	34,0	45-65	120	3690	2495	1135	2400
F305RA.2.28*	233	23,75	20,90	16,15	360 continuous	25,0	34,0	45-65	120	3950	2525	1195	2400
F305RAC.2.23*	263	26,81	8,60	5,00	360 continuous	25,0	34,0	45-65	120	3055	2475	1100	2400
F305RAC.2.24*	260	26,50	10,65	6,95	360 continuous	25,0	34,0	45-65	120	3265	2475	1130	2400
F305RAC.2.25*	254	25,90	12,95	9,20	360 continuous	25,0	34,0	45-65	120	3440	2475	1130	2400
F305RAC.2.26*	251	25,60	15,25	11,40	360 continuous	25,0	34,0	45-65	120	3605	2515	1130	2400
F305RA.2.24 L212*	255	26,00	18,40	11,30	360 continuous	25,0	34,0	45-65	120	3850	2475	1320	2615
F305RA.2.24 L213*	255	26,00	20,40	13,25	360 continuous	25,0	34,0	45-65	120	3930	2475	1320	2615
F305RA.2.24 L214*	255	26,00	22,30	15,05	360 continuous	25,0	34,0	45-65	120	4000	2475	1320	2615
F305RA.2.25 L212*	248	25,28	20,70	13,50	360 continuous	25,0	34,0	45-65	120	4025	2485	1315	2650
F305RA.2.25 L213*	248	25,28	22,70	15,45	360 continuous	25,0	34,0	45-65	120	4105	2485	1315	2650
F305RA.2.26 L102*	244	24,88	23,22	15,70	360 continuous	25,0	34,0	45-65	120	4010	2515	1320	2585
F305RAC.2.24 L212	260	26,50	16,80	10,50	360 continuous	25,0	34,0	45-65	120	3765	2475	1320	2615
F305RAC.2.24 L213	260	26,50	18,80	12,45	360 continuous	25,0	34,0	45-65	120	3845	2475	1320	2615
F305RAC.2.24 L214	260	26,50	20,70	14,25	360 continuous	25,0	34,0	45-65	120	3915	2475	1320	2615

* GB / Load diagram into the brochure - IT / Diagramma di carico nel depliant - FR / Abaque de charge dans le dépliant - DE / Lastdiagramm im Prospekt - ES / Diagrama de carga en el catálogo - NL / Draagvermogen grafiek in het prospectus

	Lifting capacity	Standard reach	Hydraulic extension	Rotation	Rotation torque	Working pressure	Pump capacity	Oil tank capacity	Crane weight	Crane width	Installation width	Crane height
	Capacità di sollevamento	Sbraccio standard	Estensione idraulica	Angolo di rotazione	Coppia di rotazione	Pressione d'esercizio	Portata della pompa	Capacità serbatoio olio	Peso gru	Larghezza gru	Larghezza di montaggio	Altezza gru
	Capacité de levage	Bras standard	Extension hydraulique	Rotation	Couple de rotation	Pression d'utilisation	Débit de la pompe	Capacité du réservoir d'huile	Poids de la grue	Largeur de la grue	Largeur de montage	Hauteur de la grue
	Hubmoment	Standardausladung	Hydraulische Ausladung	Schwenkbereich	Schwenkmoment	Arbeitsdruck	Ölfördermenge	Öltankgröße	Eigengewicht des Std. krane	Kranbreite	Einbaubreite	Kranhöhe
	Capacidad de elevación	Brazo standard	Extensión hidráulica	Ángulo de rotación	Potencia de rotación	Presión de trabajo	Capacidad de la bomba	Capacidad depósito aceite	Peso de la grúa	Anchura de la grúa	Anchura de montaje	Altura de la grúa

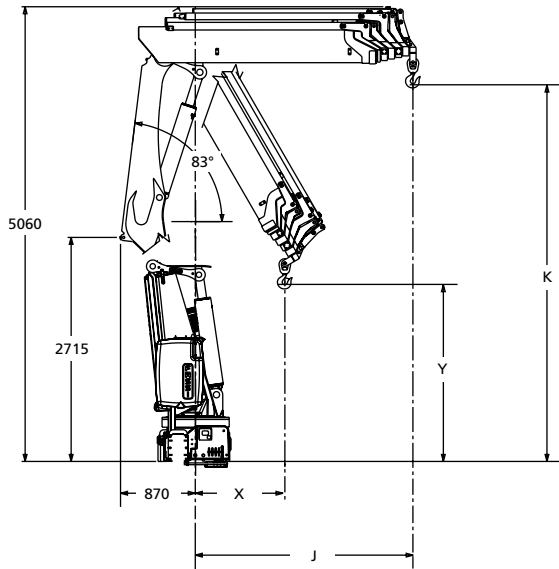
F305RA xe-dynamic



	.22	.23	.24	.25	.26	.28
C	1085	1130	1135	1135	1135	1195
D	1240	1295	1290	1290	1290	1350

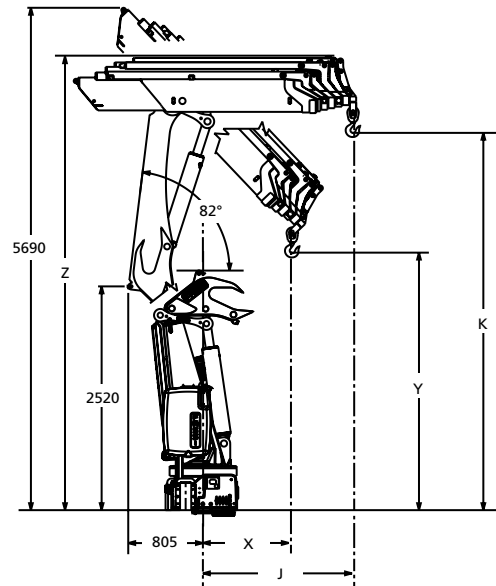
	STD	XL	XXL
A	1395	1850	2180
B	1395	1850	2180

F305RA xe-dynamic



	X	Y	K	J
F305RA.2.22	1000	3525	4080	2135
F305RA.2.23	1000	3335	4145	2215
F305RA.2.24	1000	3165	4165	2295
F305RA.2.25	1000	3006	4185	2375
F305RA.2.26	1000	2860	4205	2455
F305RA.2.28	1000	2661	4240	2575

F305RAC xe-dynamic



	X	Y	K	J	Z
F305RAC.2.23	1500	1460	-	4105	5000
F305RAC.2.24	1500	1540	3890	4125	5060
F305RAC.2.25	1500	1620	3645	4145	5060
F305RAC.2.26	1500	1700	3455	4165	5120

Lifting Tomorrow



LEADER IN INNOVATION



FASSI GRU S.p.A.
Via Roma, 110
24021 Albino (Bergamo) ITALY
Tel- +39 035 776400
Fax +39 035 755020
www.fassi.com
fassigr@fassigr.com

COMPANY WITH
MANAGEMENT SYSTEM
CERTIFIED BY DNV GL
= ISO 9001 =
= ISO 14001 =